



Ranger M

Magnetic Design Total Station



2" Accuracy

1000m

Inpad software supported

Ranger M High-precision Total Station



Advanced Optical System
Europe optical technology helps effectively suppress chromatic aberration and make clearer observation.



BLE 5.0
Low energy enables more ways of measurement.



Efficient Processor
Equipped with ARM architecture arm processor to lower energy and improve the stability of the total station.



USB Flash Drive
Support data upload and download and update firmware.



Lithium-ion Battery
Working time up to 20 hours.



Touch Measurement
The touch trigger key helps mitigate the impact of jitter on the measurement.



Handy Brake Wrench
User never feels tired with the ergonomic design which fits human fingers. Lock and unlock with a gentle press on the wrench.



Coaxial Laser Plummet
Coaxial laser plummet makes it more convenient to track the targets.



Precise Distance Measuring Technology

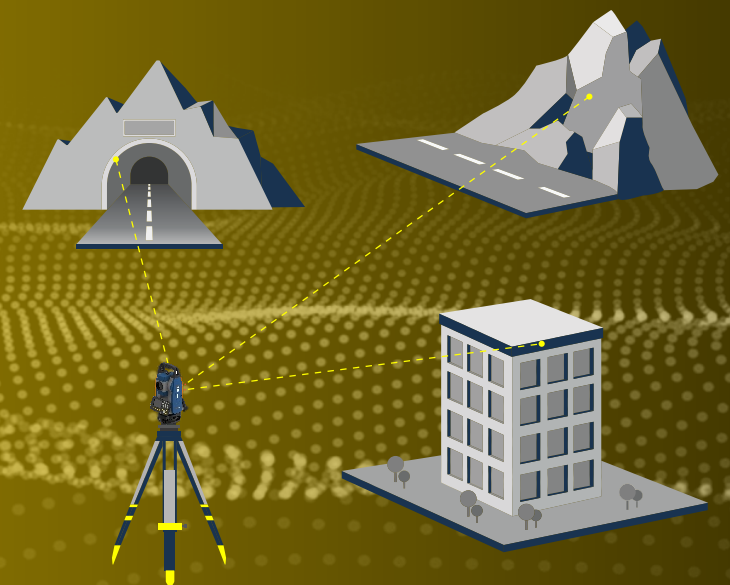
Ranger M can achieve fast and accurate distance measurement through built-in eight adaptive high-frequency measuring rulers and advanced phase laser ranging algorithms, meeting the accuracy requirements of various advanced engineering measurements.

1000 M

Non-Prism Distance measurement

4000 M

Single Prism Distance Measurement



Ease-to-use Interface

Equipped with a full-featured operation panel, 2.8-inch bright color screen, and mute buttons with comfortable spacing. Built-in commonly used measurement functions, standard Bluetooth 5.0 for convenient data transmission, and the third-party application. Ranger M is a combination of advanced hardware and software.



2.8-inch Color Screen

Larger screen brings more data display and good viewing experience.

Rounded backlight button

The rounded backlight button makes it easier for measurement work at night.

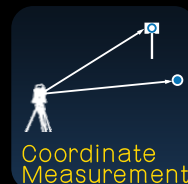
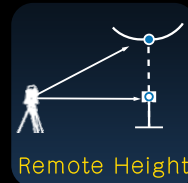
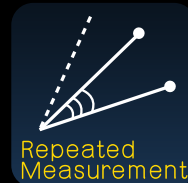
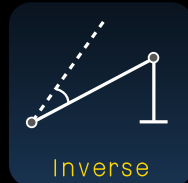
Customized Fn Function Key

The customized function key for a personalized total station.

One-touch Laser Fixed

One touch, rapid centring and leveling up for measurement.

On-board Measurement Software



Professional Set

Total station	X1
Battery	X2
Charger	X1
Tool bag	X1
USB flash drive	X1
RP60 reflector	X1
RP30 reflector	X1
Objective cap	X1

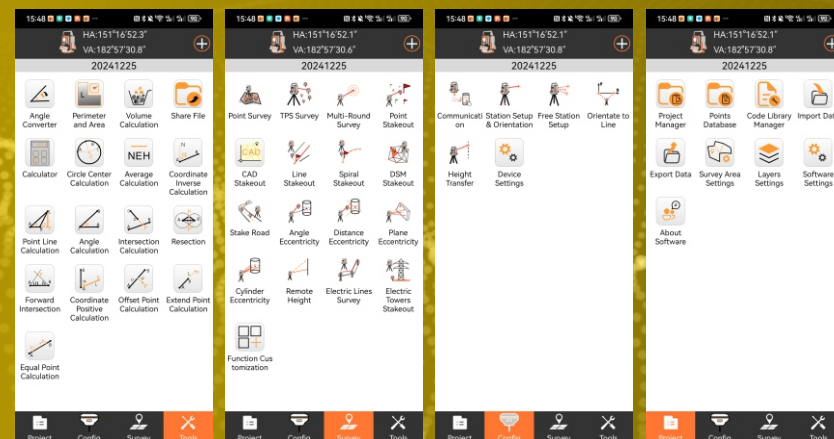


Technical Specification

Telescope	Image	Right-reading	
	Magnification	30x	
	Field Of View	1°30'	
	Minimum Focus	1.7m	
Angle Measurement	Resolution	2.8"	
	Accuracy	2"	
	Reading System	Absolute Encoders	
	Minimum Reading	1"	
Distance Measurement	Measuring	Non-Prism	1000m
		Reflector	2000m
		Single Prism	4000m
	Accuracy	Single Prism	$\pm(2\text{mm}+2\times 10^{-6}\times D)$
		Non-Prism	$\pm(3\text{mm}+2\times 10^{-6}\times D)$
		Reflector	$\pm(3\text{mm}+2\times 10^{-6}\times D)$
Compensator	Time	Fine :0.7s Rapid:0.5s Tracking:0.3s	
	Minimum Display	Fine/Tracking:0.1mm	
	Compensator Type	Dual axis	
	Compensator Range	$\pm 4'$	
Laser Plummet	Compensator Resolution	1"	
	Accuracy	1.5mm@1.5m	
	Wavelength	635nm	
	Safety	Class2	
Level Vial Sensitivity	Output Power	0.7-1.0nw	
	Tubular Level	30"/2mm	
	Circular Level	8"/2mm	
	Screen	2.8-inch colour screen	
Keyboard	Key	x26	
	Backlight	Support	
Power	Battery	Type: 2600mAh Li-ion battery	
		Low voltage alert: Shut down in 10 mins	
	Working Time	Angle Measuring: 25h	
		Distance + Angle Measuring: 20h	
Physical	Operating Temperature	$-20^{\circ}\text{C} \sim +50^{\circ}\text{C}$	
	Storage Temperature	$-30^{\circ}\text{C} \sim +55^{\circ}\text{C}$	
	Water/Dust Proof	IP54	

Compatible with third-party APP

Ranger M supports mobile phone communication via Bluetooth with third parties APP such as DiMap Pro or Surveyor software to realize the function of intelligent total station.



*The above technical parameters are for your reference. The comp and planning of the product based on the actual product. any reserves the right to change the design

GUANGZHOU INTEC SURVEYING TECHNOLOGY CO.,LTD

Room 605,6/F,Building C,No.18 Dong ming 3rd road ,Huangpu district, Guangzhou 510700,China

www.intec-surveying.com